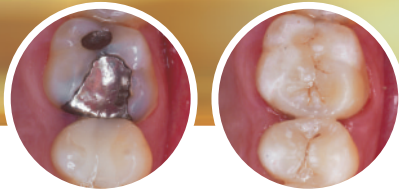


# 3M ESPE Laboratory Tips

SINFONY™ INDIRECT LAB COMPOSITE

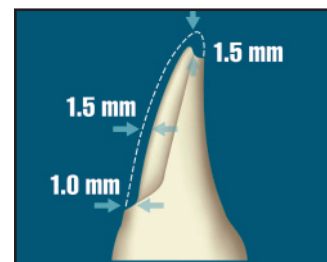


[ before ] [ after ]

## Preparation Guide

### Anterior Veneer Preparation:

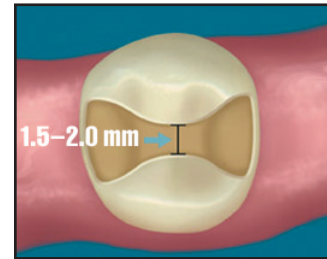
- 1.5 mm incisal reduction
- 1.5 mm facial reduction
- 1.0 mm gingival facial reduction
- Rounded internal line angles



Anterior

### Premolar Inlay Preparation:

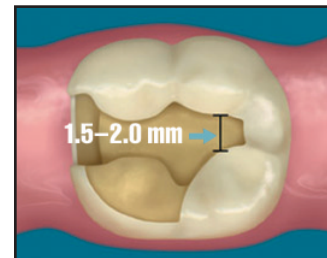
- Butt joint margin
- 1.5–2.0 mm isthmus width
- 1.5 mm minimum depth at bottom of the fissure
- Rounded internal line angles



Premolar

### Molar Onlay Preparation:

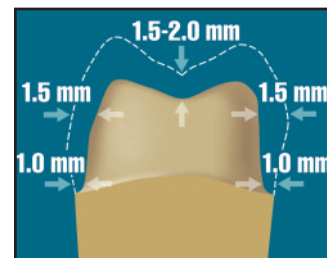
- 1.5–2.0 mm isthmus width
- 1.5 mm minimum depth at bottom of the fissure
- Rounded internal line angles
- Butt joint margin
- 1.5–2.0 mm minimum layer thickness for cusp preparation



Molar

### Full Crown Preparation:

- 1.5–2.0 mm occlusal/incisal reduction
- 1.5 mm axial reduction
- 1.0 mm shoulder reduction with butt joint



Full Crown

To guarantee clinical success, the following minimum material thickness is recommended.